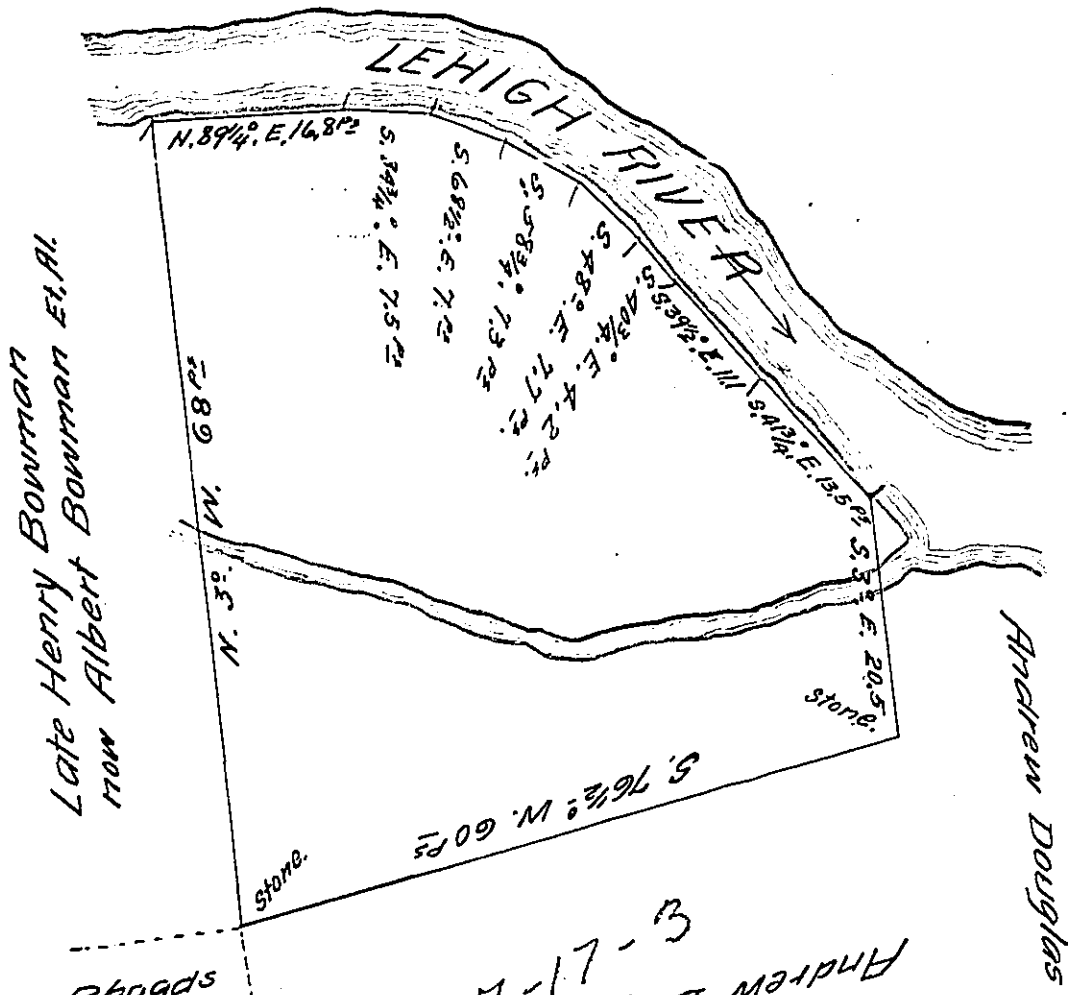


D-169



John Rhoads
a-49-297

A-17-3
Andrew Douglas

A Draft of a tract of land situated in the Township of East Penn and County of Carbon containing Eighteen (18) acres, Eighty Four (84) perches and allowance of six per cent. for roads, etc. Surveyed the Twenty First day of March 1912, in pursuance of a warrant granted to Wilson Bowman, Clara A Bowman, Dallas Bowman, Albert Bowman and ~~the~~ Catherine Noll dated the Fifteenth day of March 1912.

W.B. Tombler

County Surveyor.

To Hon. Henry Houck,
Secretary of Internal Affairs

IN TESTIMONY that the above is a copy of the original remaining on file in the Department of Internal Affairs of Pennsylvania, made conformably to an Act of Assembly approved the 16th day of February, 1833, I have hereunto set my Hand and caused the Seal of said Department to be affixed at Harrisburg, this ninth day of April 1912.

Henry Houck
Secretary of Internal Affairs.